

anti-CRP monoclonal antibodies

Specifications

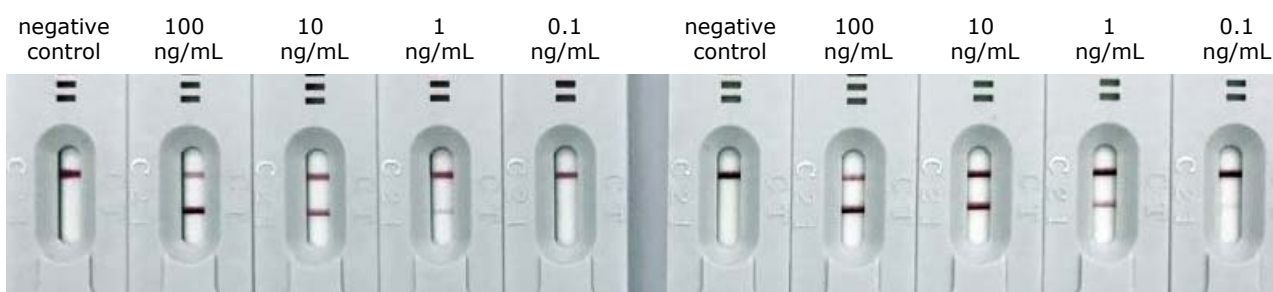
Specificity : human C-reactive protein (CRP)
 Source : mouse
 Purification : affinity purification
 Presentation : PBS or TBS, pH7.4, 0.09% sodium azide
 Storage : -20°C (4°C for short term)

Applications Lateral flow, ELISA, and others

Application data 1 : Lateral Flow assay

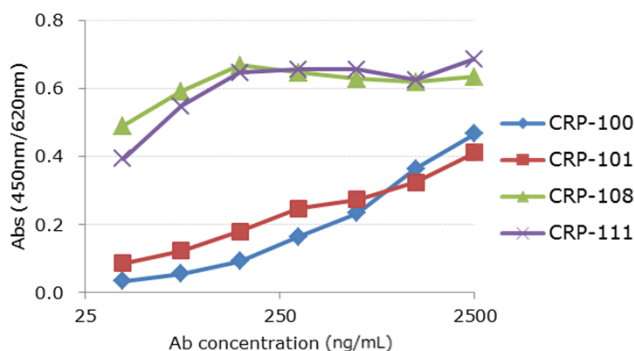
CRP-101 : Capture / CRP-100 : Detection

CRP-108 : Capture / CRP-111 : Detection



Application data 2 : ELISA

1µg/mL of CRP in PBS was coated.
 Serially diluted antibodies were added.
 Detected by 1:30,000 diluted
 HRP-conjugated secondary antibody.



Ordering Information

Product	Catalogue No.	mAb Isotype	Recommended Usage
anti-CRP	CRP-100	IgG1 - kappa	Detection (w/ CRP-101)
anti-CRP	CRP-101	IgG1 - kappa	Capture (w/ CRP-100)
anti-CRP	CRP-108	IgG1 - kappa	Capture (w/ CRP-111)
anti-CRP	CRP-111	IgG2b - kappa	Detection (w/ CRP-108)